





**\*\*AVAILABLE AUGUST 2026\*\* \*\*145ppw\*\***  
**\*\*FURNISHED\*\*** A well presented three bedroom upper 'Tyneside' flat is ideally located on Fairfield Road, West Jesmond. Conveniently placed directly close to West Jesmond Metro Station and only a stone's throw from the shops, restaurants and café's of Brentwood Avenue and Acorn Road, as well as the nightlife of Osborne Road.

The accommodation briefly comprises ground floor entrance; stairs leading to first floor landing with storage cupboard; three bedrooms, all doubles and similar in size; bathroom WC with three piece suite; spacious lounge with feature fireplace and built in alcove storage; kitchen in rear off shoot, with appliances and stairway with door leading to rear yard. Externally there is a private yard to the rear and on street permit parking to the front.

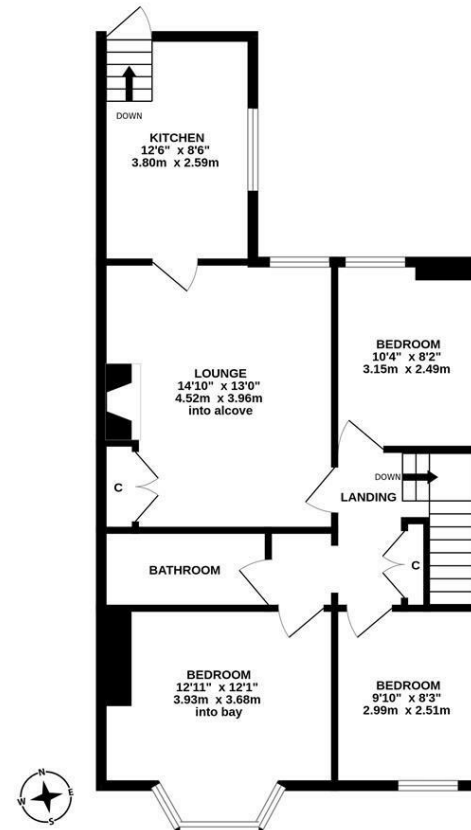
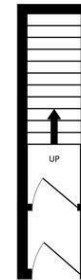
Available fully furnished with gas central heating and double glazed windows, a great property ideal for student or professional sharers.

Available 8th August 2026 | £145pppw/  
 £1,885pcm | First Floor 'Tyneside' Flat | Three Double Bedrooms | 758 Sq. Ft (70.4m<sup>2</sup>) | Well Presented | Furnished | Lounge | Kitchen | Bathroom WC | GCH & DG | Private Rear Yard | Great Location | Storage Space | Close To West Jesmond Metro Station | Council Tax Band: B | EPC Rating: E



GROUND FLOOR  
15.14m<sup>2</sup> (161.7 sq.ft.) approx.

FIRST FLOOR  
107.66 m<sup>2</sup> (1157.3 sq.ft.) approx.



TOTAL FLOOR AREA: 758 sq.ft. (70.4 sq.m.) approx.

Whilst every attempt has been made to ensure the accuracy of the floorplan contained here, measurements of doors, windows, rooms and any other items are approximate and no responsibility is taken for any error, omission or mis-statement. This plan is for illustrative purposes only and should be used as such by any prospective purchaser. The services, systems and appliances shown have not been tested and no guarantee as to their operability or efficiency can be given.  
 Made with Metropix ©2023

**£1,885 PCM**

**IMPORTANT NOTE:** These particulars and the descriptions and measurements herein do not constitute representation and whilst every effort has been made to ensure accuracy, this cannot be guaranteed.

